

Eastside Swimming Pool
City Council
Study Session
Tuesday, May 30, 2017

TOPICS TO DISCUSS

- LOCATIONS
- FUNDING
- AQUATIC CENTER EXAMPLES WITH COSTS TO CONSTRUCT
- AMENITIES OPPORTUNITIES
- PROGRAMMING OPPORTUNITIES
- CITY COUNCIL DISCUSSION & DIRECTION TO STAFF

POTENTIAL EASTSIDE LOCATIONS

Miller Park – 3.96 acres – owned by City of Yakima

Martin Luther King Jr. Park – 4.01 Acres – owned by City of Yakima

Lions Park – 3.39 Acres – owned by the City of Yakima

Yakima Speedway property – 40 + Acres – currently for sale

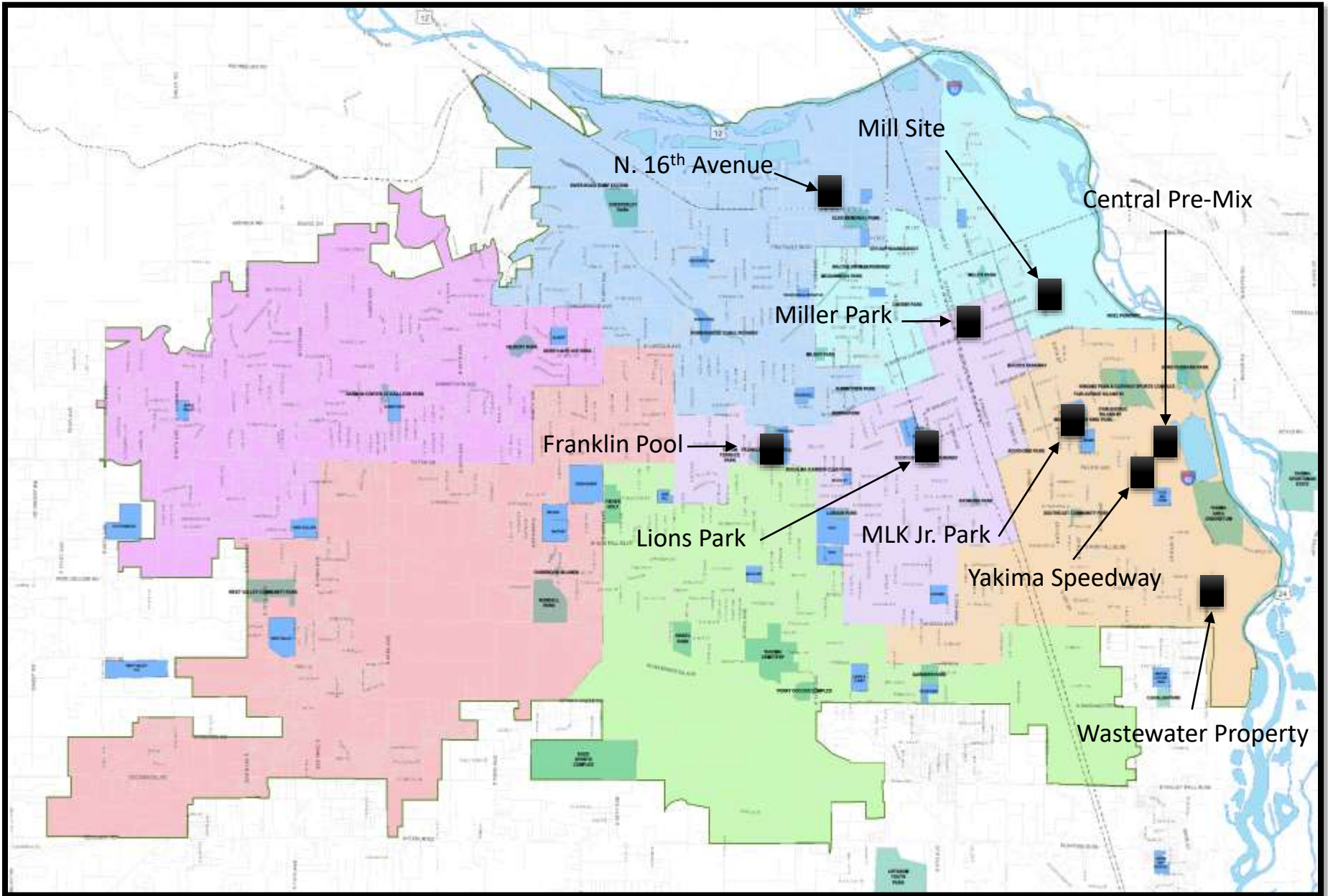
North 16th Avenue – 8.95 Acres – currently for sale

Mill Site property – 200 + Acres – Potentially for sale

Central Pre-Mix property – 28 Acres – Potentially for sale

Waste Water property - 24 Acres – owned by City of Yakima

Map of Potential Locations



Miller Park

Park is located at 4th Street and East "E" Street

3.96 acres

Owned by the
City of Yakima

On street parking
available

60 + parking spaces

Spray Park

Picnic shelter

Playground

4 Basketball Courts

Performance area



Some of the current amenities would need to be removed to construct a new pool

Martin Luther King Jr. Park

Park is located at South 9th Street and East Race Street

4.01 acres

Owned by the
City of Yakima

On street parking
available

60 + parking spaces

Spray Park

Mini soccer court

Playground

2 Basketball courts



Some of the current amenities would need to be removed to construct a new pool

Lions Park

Park is located at South 5th Avenue and Pine Street

3.39 acres

Owned by the
City of Yakima

120 parking spaces

Indoor Pool

Playground

Small shelter

6 Tennis Courts



Some of the current amenities would need to be removed to construct a new pool

Yakima Speedway Property

Speedway property is located along Interstate Hwy 82 and Pacific Avenue

40 + acres

Currently for sale

Considerations

- Not owned by COY
- Larger parcel than needed



North 16th Avenue Property

North 16th property is located at N. 16th and State Hwy 12

8.95 acres

Currently for sale

Considerations

- Access from 16th with a traffic light will be costly
- Not easily accessible



Central Pre Mix Property

Central Pre – Mix property is located along Interstate Hwy 82 and Beech Street

28 acres

Potentially for sale

Consideration

- Environmental concerns
- Not easily accessible



Mill Site Property

Mill site property is located along Interstate Hwy 82 and East G Street

200 + acres

Potentially available for sale

Considerations

- Slated for retail/commercial development
- Good access from 10th Street roundabout
- Future East/West corridor



Waste Water Property

Waste Water property is located east of former Kmart and south of State Hwy 24

24 acres

Owned by City of Yakima

Considerations

- Property slated for WWTP expansion
- Access challenges



FUNDING

Annual Debt Service

20 Year Repayment at 3.0% interest rates

- Old Town Aquatic Ctr., Lewisville, Texas - \$2.3 Million - \$154,600 at 3.0%
- Sun Valley Aquatic Ctr., Lewisville, Texas - \$3 million - \$201,647 at 3.0%
- Doug Russell Aquatic Ctr., Midland, Texas - \$6 million - \$403,294 at 3.0%
- Blanchette & Walpelhorst Aquatic Centers - \$8.5 million - \$604,941 at 3.0%
St. Charles, MO

Franklin Pool Operating Cost & Revenue

2017 Budget - Expenditures

Wages & Benefits	\$ 97,500
Operating Supplies	\$ 25,000
Repair & Maintenance	\$ 5,000
Utilities	<u>\$ 45,000</u>
Total Expenditures	\$172,000

2016 Budget - Revenue \$ 108,000

Operational Cost Less Revenue (\$65,500)

****Operating costs do not include capital improvements & administration costs***

Children's wading pool

Water slide

Large swimming area with lap lanes

5 Shade umbrellas

Concessions

113 Parking spaces

Open Mid June through August

Over 30,000 visitors in 2016

Capacity 500



Annual Paws In The Pool Event

AQUATIC CENTERS EXAMPLES COSTS TO CONSTRUCT

The Old Town Aquatic Center, Lewisville, Texas



Cost to Construct - \$2.3 million dollars

The Old Town Aquatic Center Amenities

3,900 sq. ft. Outdoor Leisure Pool

Zero-depth entry

Double-looped waterslide

Three spray grounds

Drenching tumble buckets

Raindrop water umbrellas

Aquatic playground slides

Capacity 300



Old Town Aquatic Center

4.25 Acres

103 parking spaces



Sun Valley Aquatic Center, Lewisville, Texas



Cost to Construct - \$3 million dollars

Sun Valley Aquatic Center Amenities

25-yard Competition Pool

Lily Pad/Activity Area

Leisure Pool w/Play Features

2 Double-Loop Slides

Lazy River

Tot Pool

Group Shelter Area

Concession Area

Capacity 700



Sun Valley Aquatic Center



Doug Russell Aquatic Center, Midland, Texas



Cost to Construct - \$6 million dollars

Doug Russell Aquatic Center Amenities

2,400 sq. ft. Lap Pool

Climbing wall

Water basketball

4,800 sq. ft. Lazy River

Waterslides

Lily pad walk

700 sq. ft. Recreation Pool

Zero depth entry

Spray features

Shade Canopies

Capacity 900



Doug Russell Aquatic Center



Blanchette Aquatic Center, St. Charles, Missouri



Cost to Construct - \$8.5 Million

Blanchette Aquatic Center



The Blanchette Aquatic Center Amenities

Two Waterslides

Otter Slide

Lily Pad Walk

Diving Area

Lap Swimming

Drop Slide

Children's Water
Playground

Capacity 800



Blanchette Aquatic Center

4.15 Acres

150 parking spaces



Walpelhorst Aquatic Center, St. Charles, Missouri



Cost to Construct - \$8.5 Million

Wapelhorst Aquatic Center Amenities

Water Rapids Inner Tube Ride

Underground Waterslide

Open Waterslide

Children's Play Area

General Swimming Area

5 story Speed Slide

Zero Depth Entry

Capacity 1000



Walpelhorst Aquatic Center

5.17 Acres

200 + parking spaces



AMENITIES OPPORTUNITIES

ZERO DEPTH ENTRY



WATER PLAYGROUNDS



DROP WATER SLIDES



LAZY RIVER



WATER PLAY AREAS



SHADE AND PICNIC AREAS



CONCESSIONS & EATING AREAS



LOCKER FACILITIES



SPLASH AND SPRAY ZONES



WATER SLIDES



SUN BATHING & POOL DECK AREAS



PROGRAMMING OPPORTUNITIES

SWIM LESSONS

RECREATION SWIM

EVENING FAMILY SWIM

WATER WALKING

WATER EXERCISE

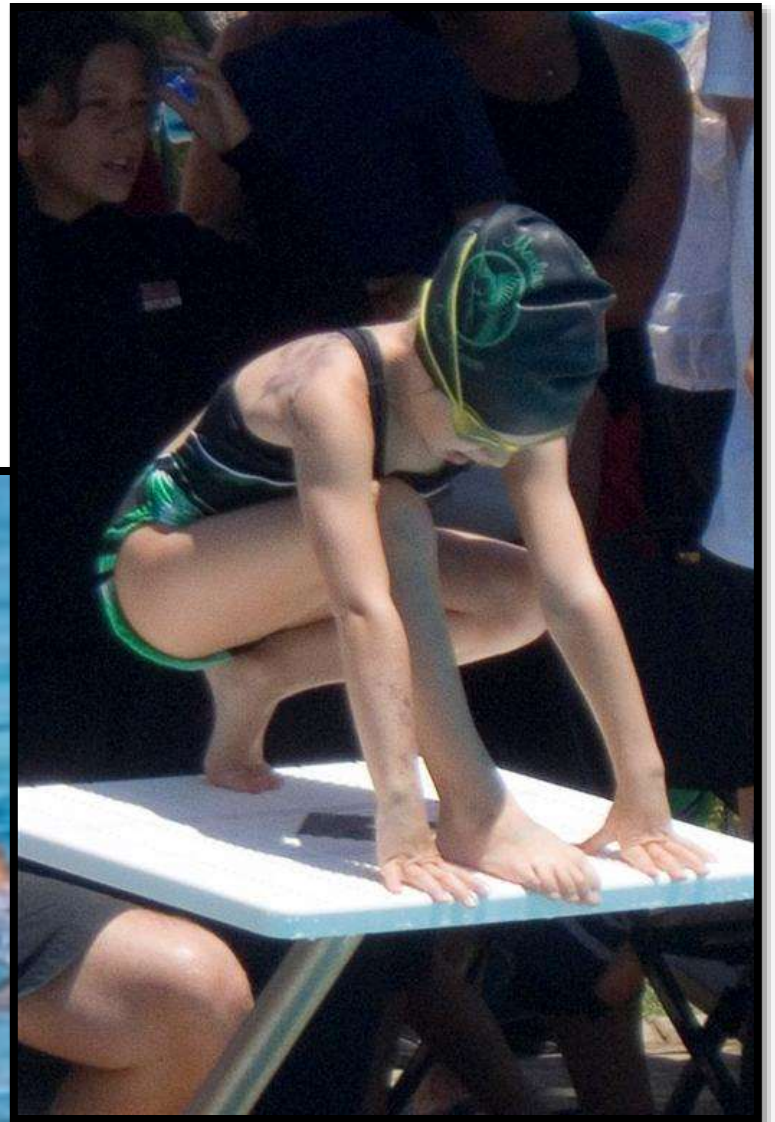
LAP SWIMMING

WATER SAFETY/LIFEGUARD TRAINING

SPECIALTY CLASSES – KAYAK/SCUBA

PRIVATE PARTY RENTALS

COMPETITIVE & LAP SWIMMING AREA



SWIM LESSONS AREA



LIFEGUARD AND WATER SAFETY TRAINING



WATER EXERCISE & FITNESS CLASSES



WATER WALKING



THERAPEUTIC AREAS



QUESTIONS

CITY COUNCIL DISCUSSION
&
DIRECTION TO STAFF