

Murray, Matthew

From: Carney, John
Sent: Wednesday, November 2, 2022 2:26 PM
To: Murray, Matthew
Subject: GIS Services

Matt,

After last week's presentation, I thought it might be valuable for you get a list of some examples of GIS tools we provide your department. We have full access to all of Spillman's data, which includes data related to other agencies within the County.

Here are some apps:

1. DEX Query: This is a Spillman data exchange query app that gets used to do quick mapping of cases or citations for PDRs and other queries. <https://gis.yakimawa.gov/dex>
2. AVL Query: This allows the user to query vehicle locations for a user defined period of time, for any unit or agency. <https://gis.yakimawa.gov/avl/spillmanavl.html>
3. MonkeyMap: An app that displays real-time information of events and vehicles. It has an ALI feed component that SunComm prefers over Spillman mapping. <https://gis.yakimawa.gov/ps>
4. IBR Report: Displays preliminary IBR Crime statistics for user defined month/year. <https://gis.yakimawa.gov/crimestats/>
5. Threshold Analysis: Analyzes statistics for defined crime types and shows current trends. https://gis.yakimawa.gov/crimestats/threshold_analysis.html

Here is a list of dashboards:

6. Law Offenses: A dashboard that shows case data in real time. Updates every 5 minutes. <https://gis.yakimawa.gov/portal./apps/dashboards/d0b3b52d0f0241e2a3868bca933f83e0>
7. Calls for Service: A daily update of calls for service and officer involvement time. <https://gis.yakimawa.gov/portal/apps/dashboards/bc8023c9ba344d84be86c4fa7c1e098e>
8. Domestic Violence: A dashboard and app that display various DV cases. <https://gis.yakimawa.gov/portal/apps/dashboards/d6965a6b1a4543c18bfd0d9bf6e986df>
9. Traffic Corridors: An emphasis by traffic control for activity in two corridors. <https://gis.yakimawa.gov/portal/apps/dashboards/2c6748b5dedd406191d1217f090608dc>
10. Patrol Activity: Statistics for officer activity. https://gis.yakimawa.gov/portal/apps/opsdashboard/index.html#/55b9f91776924d81bad675689e20ac_c0
11. Gun Involvements: Displays current gun involved cases and locations county wide. <https://gis.yakimawa.gov/portal/apps/dashboards/9b2a229e1f9d46fead433f1effafc405>
12. Major Crimes: A public facing dashboard that shows year to date activity. <https://yakima.maps.arcgis.com/apps/dashboards/4f40de12008b4c95a1b588434319c6c1>
13. Murder Map: A public facing dashboard that shows homicide activity for Yakima. <https://gis.yakimawa.gov/portal/apps/opsdashboard/index.html#/e42f8315d81d461c8974243cf885183b>
14. Intimate Partner DV: A public facing dashboard for intimate partner domestic violence. <https://yakima.maps.arcgis.com/apps/dashboards/05f039481ba445f09199a35363cfec64>
15. Collisions: Dashboard of current collision information. <https://yakima.maps.arcgis.com/apps/opsdashboard/index.html#/aa068e91face468c88dc9794390028ae>



167f - EMR MEDIC

621 SIGNAL PEAK RD; WHITE SWAN HIGH SCHOOL, WHI
ONDT - LVFD - priority 1
11/07/2022 08:58:38 LV01

Zoom Prefires Directions SV (36)

175i - ANIMAL PROBLEM

1810 YOUNG ST, GRV
RCVD - GVPD - priority 4
11/07/2022 09:14:59

Zoom Prefires Directions SV (4)

176f - EMR RED

10 S 8TH AVE # 309; MABLE SWAN MANOR, Y2
ARVDH - YKFD - priority 1
11/07/2022 09:15:08 LA430

Zoom Prefires Directions SV (20)

180f - EMR MEDIC

360 W WAPATO RD, WAP
ARRVD - LVFD - priority 1
11/07/2022 09:22:00 LV06

Zoom Prefires Directions SV (75)

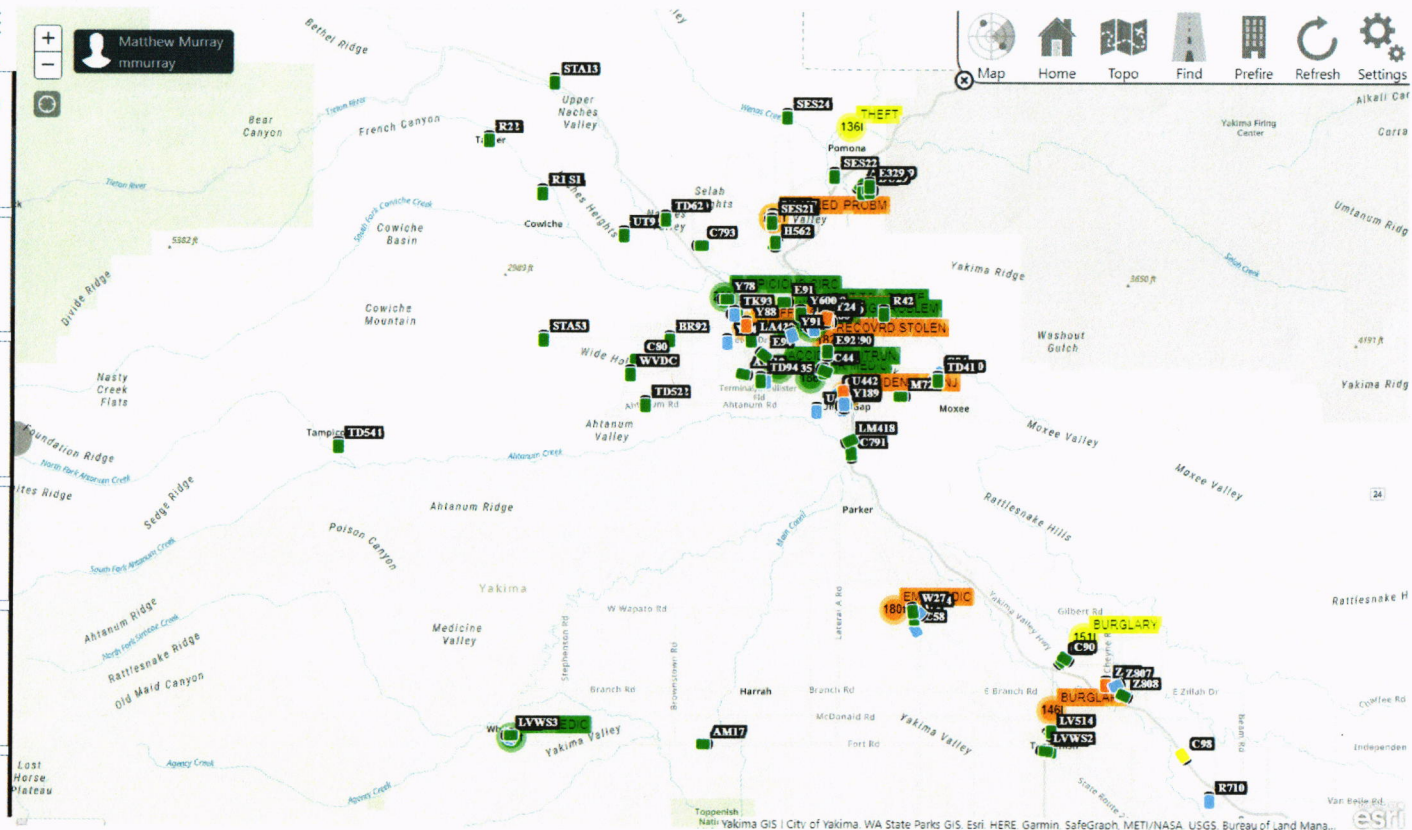
181i - UNWANTED GUEST

2117 W LINCOLN AVE; LINCOLN CENTER LAUNDROMAT, Y2
ENRT - YKPD - priority 3
11/07/2022 09:19:52 Y25

Zoom Prefires Directions SV (14)

182i - RECOVERD STOLEN

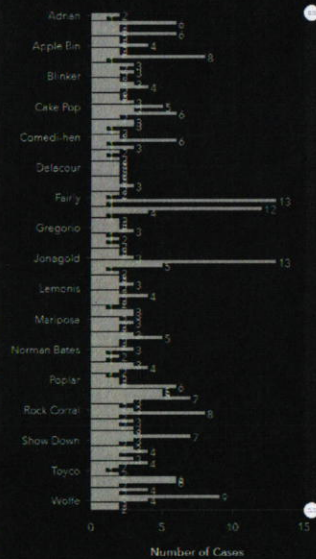
S 9TH ST & PACIFIC AVE, Y1
ARRVD - YKPD - priority 3



Gun Involvements Dashboard

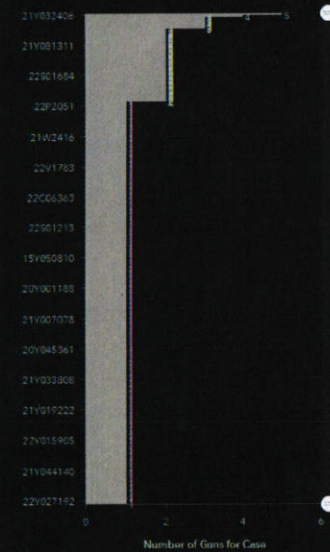
Total Guns
131

Gun Chart



Total Cases
394

Case Chart



City of Yakima, WA State Parks GIS, Esri, HERE, Garmin, SafeGraph, FAO, METI/NASA, USGS, Bureau of Land Management, EPA, NPS

