

Solid Waste Services Mission

The mission of the Solid Waste and Recycling Division (SWRD) is to protect the public health and safety of the City and all residents of the City by providing quality municipal solid waste services that are efficient, cost effective and environmentally responsible.

- ▶ We are an Enterprise Fund with a budget of \$9 million
- ▶ Revenue is generated by rates – based on the cost of service, special hauls, callbacks, etc.
- ▶ The Refuse Division provides weekly curbside residential garbage and yard waste service to approximately 26,000 single family and 320 multi-family residents
 - ▶ We service approximately 7,060 homes a day running 14 routes
 - ▶ We had an 18% increase in volume of garbage due to Covid-19 over 2019
 - ▶ Collected 33,977 tons of garbage (2021)
 - ▶ 2022 YTD 22,122 tons of garbage
 - ▶ Collected 3,907.14 tons of yard waste (2021)
 - ▶ 2022 YTD 2,592 tons of yard waste



Accomplishments

- ▶ We were able to provide service to 25,687 customers during the pandemic, while working under cart shortage and staff shortage
- ▶ Added an additional Solid Waste Code Compliance Officer, which allowed us to upgrade our Clean City Program and now includes checking Saturday hot spots
- ▶ Assisted in two Community Clean-ups in 2021 and one in 2022 as part of the Clean City Program
- ▶ Installed tire pressure sensors on all Refuse Collection trucks which reduced overall tire repairs, replacement and cost



Goals

- ▶ Provide service that is efficient and cost effective to our current and future customers
- ▶ Sustain an operating reserve of 25% of total annual operating expenses
- ▶ Continue to support local community organizations and assist in Community Clean Up events
- ▶ Continue looking into RouteWare Software to update our technology, helping to make routes more efficient and cost effective

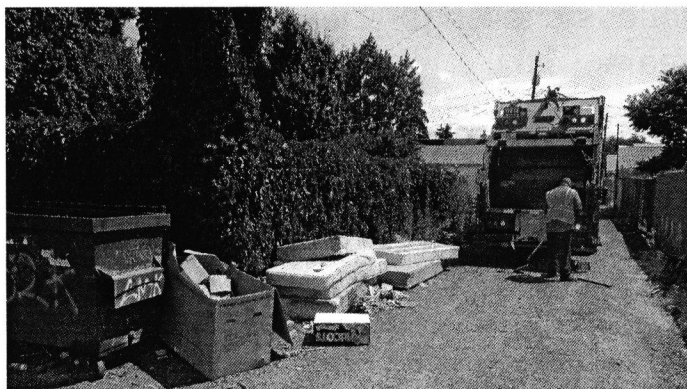
Challenges

- ▶ Urban growth is a continuous challenge- City collection services have doubled in the last 10 years
- ▶ Closure of Terrace Heights Landfill (2027-2030)
- ▶ Illegal Dumps within the City



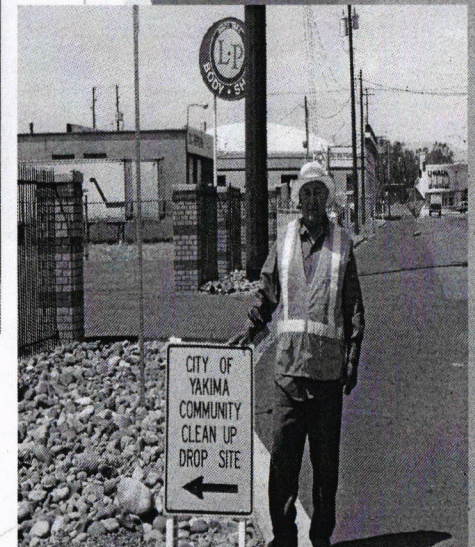
Big Challenge: Illegal Dump Issues

- ▶ Illegal Dumps are a major issue for the City and the Refuse Division as part of the Clean City Program
 - ▶ Since 2019 the Refuse Division has collected over 386 tons in illegal dumps
 - ▶ Currently 1,089 illegal dumps have been addressed by the Refuse Division
 - ▶ Over 1,350 Tires collected
 - ▶ Currently over 120 tons have been collected this year



Community Clean-ups

- ▶ The Refuse Division organizes, and assists in community clean-ups with the support from volunteers as part of the Clean City Program
- ▶ Each event provides a platform for Public Outreach and Education
- ▶ Brings community together



Community Clean Up 2022



Building A Safer, Cleaner, Heathier Community Together

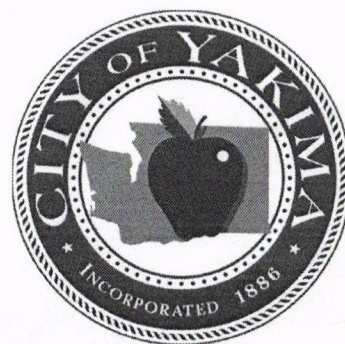
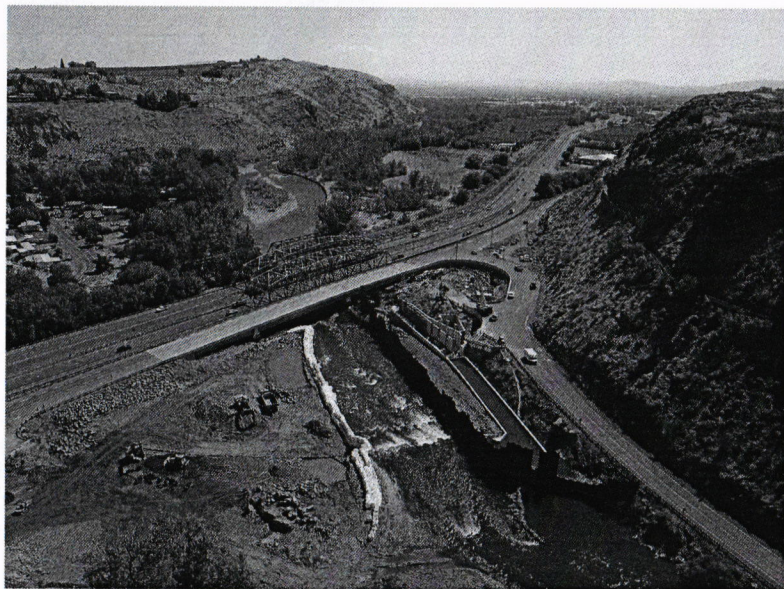


Solid Waste Budget

| Expenditures by Object | 2022 Estimated Year-End | 2023 Projected Budget | % Change 2022 to 2023 | 2024 Projected Budget | % Change 2023 to 2024 |
|--|--|--------------------------------------|--------------------------------------|--------------------------------------|--------------------------------------|
| 100 Salaries & Wages | \$ 1,549,288 | \$ 1,674,936 | 8.1 % | \$ 1,800,903 | 7.5 % |
| 200 Personnel Benefits | 661,291 | 768,368 | 16.2 % | 827,982 | 7.8 % |
| Sub-Total Salaries & Benefits | 2,210,579 | 2,443,304 | 10.5 % | 2,628,885 | 7.6 % |
| 300 Supplies for Consumption & Resale | 648,292 | 568,856 | (12.3)% | 568,856 | — % |
| 400 Services & Pass-Through Payments | 6,128,890 | 6,298,427 | 2.8 % | 6,423,610 | 2.0 % |
| Total Expenditures | \$ 8,987,761 | \$ 9,310,587 | 3.6 % | \$ 9,621,351 | 3.3 % |



QUESTIONS?



Water/Irrigation

David Brown- Water/Irrigation Manager

Office: 575-6204



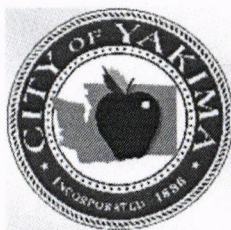
Water

- ▶ 19,400 Accounts
- ▶ Water Treatment Plant located about 7 miles West of the City
- ▶ 305 miles of mains
- ▶ Three reservoirs
- ▶ Four booster pump stations
- ▶ 4 wells
 - ▶ Kissel Well
 - ▶ Kiwanis Park
 - ▶ Gardner Well
 - ▶ Airport Well

Irrigation

- ▶ 11,200 Accounts
- ▶ Diversions
 - ▶ Nelson (can't say dam now)
 - ▶ Fruitvale Canal
 - ▶ Supply from:
 - ▶ Yakima Valley Canal
 - ▶ Naches Cowiche Canal
- ▶ 200 miles of mains
- ▶ Three reservoirs
- ▶ 66 separate systems
- ▶ 23 pump stations

Water Quality Report



2021

WATER QUALITY REPORT

Inside this issue:

| | |
|---|---|
| Introduction and source water education | 1 |
| Summary tables, pt. 1 and glossary with definitions | 2 |
| Summary tables, pt. 2 and a link to a Covid 19 info page. | 3 |
| Lead and Copper Rule sample results table | 4 |

City Of Yakima Water production for 2020

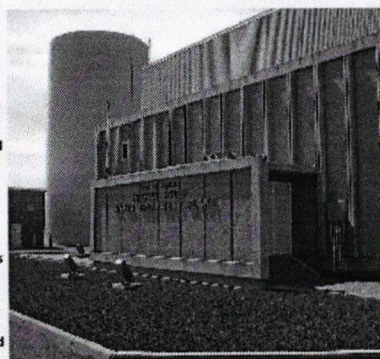
| | |
|------------------|----------------|
| Naches River WTP | 3,253 Billion |
| Airport Well | 113.71 Million |
| Kissel Well | 232.8 Million |
| Kiwanis Well | 143.2 Million |
| Gardner Well | 189.1 Million |

Naches River Water Treatment Plant

The City of Yakima is once again pleased to present our annual report on water quality. In addition to the results of our major testing programs, we hope this pamphlet will inform you about your tap water and inspire confidence that the water we all rely on is of the highest quality possible. In pursuit of that goal the Water/Irrigation Division staff is committed to around-the-clock vigilance and service, and we are proud to announce that your tap water meets and exceeds all state and federal requirements.

WHERE YOUR WATER COMES FROM

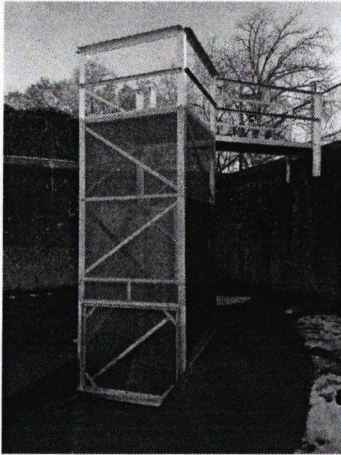
The Naches River supplies most of Yakima's drinking water. Our diversion is located along Hwy 12 and supplies the Naches River Water Treatment Plant at Rowe Hill. After treatment, water flows by gravity along the highway into town. During times of heavy runoff or when the Plant requires downtime maintenance, we can draw upon our 4 wells. They are located at Kiwanis Park, Kissel Park, Gardner Park, and Yakima Airport. These wells draw from the Ellensburg Aquifer and are also tested regularly.



Aging Infrastructure



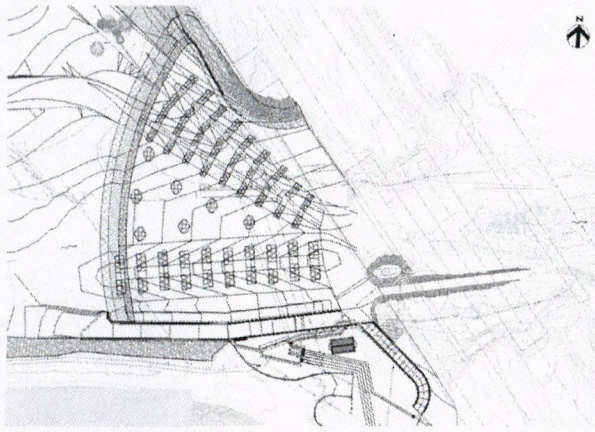
Water Mains



Irrigation Reservoir Screen
Manufactured In-House



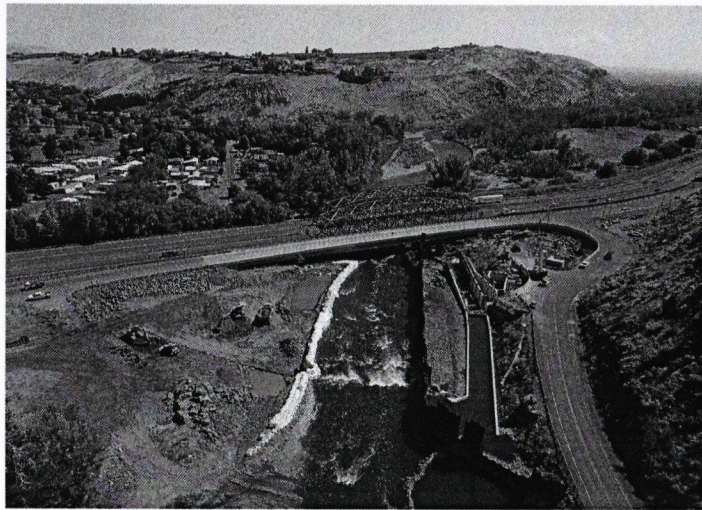
Nelson Dam Refurbishment



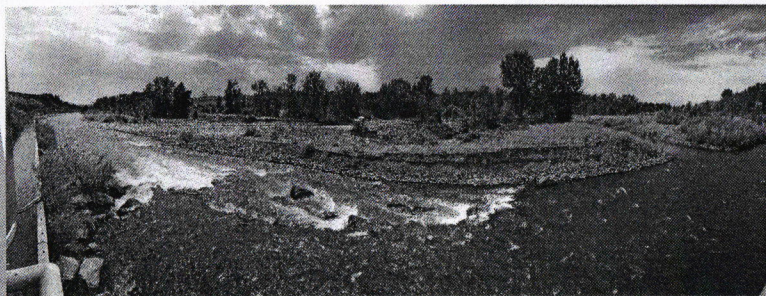
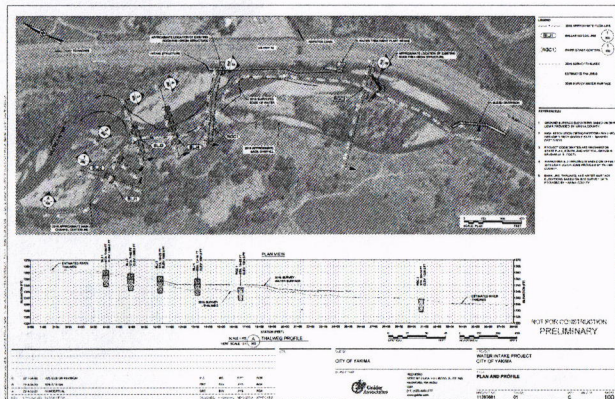
Nelson Dam Removal



Nelson Fish Ladder Removal



Water Treatment Plant Intake, River Redirection



48 Inch Water Transmission Main Protection

