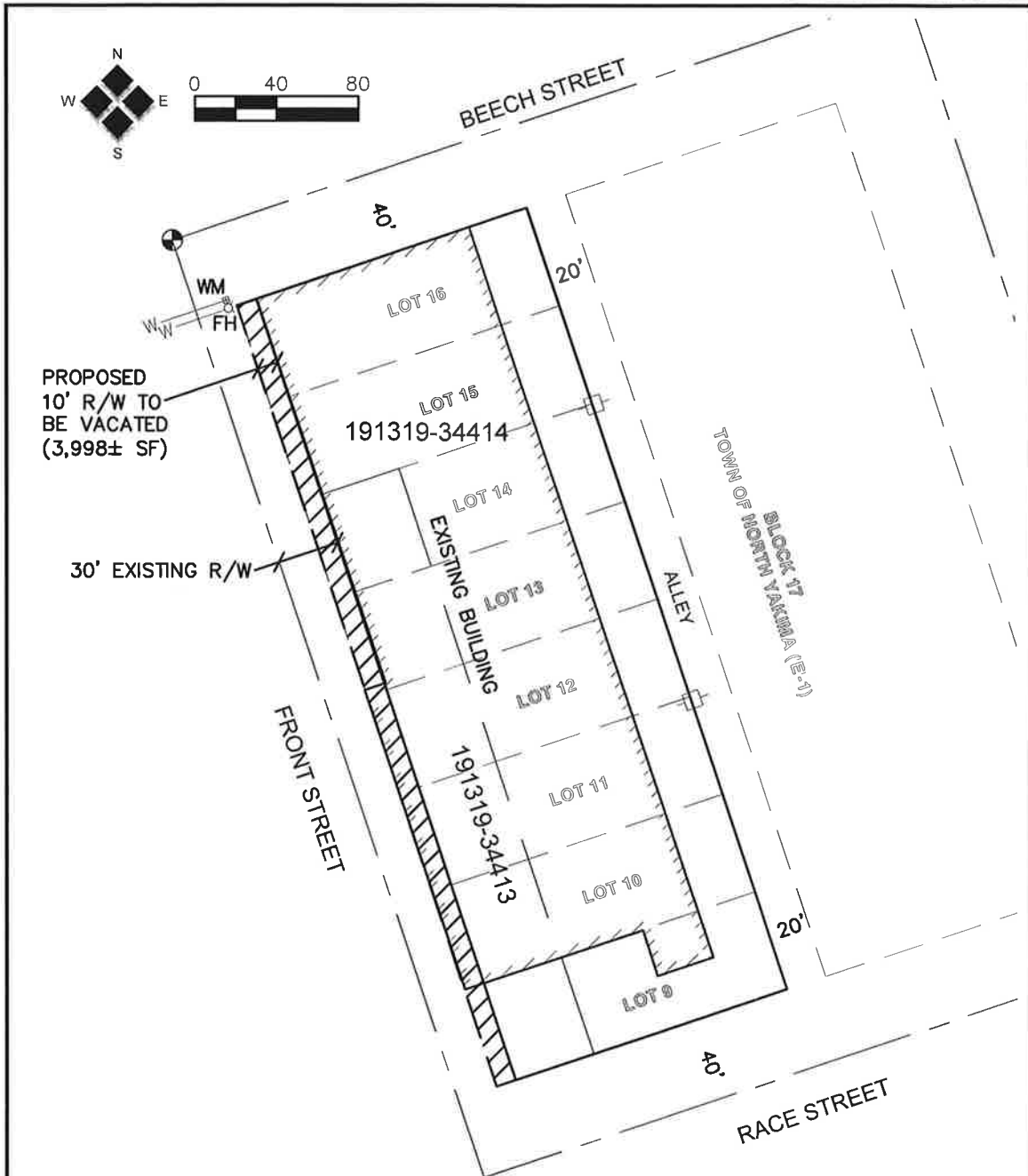


JUL 13 2022

☐ REC'VD  
☐ PAID

FAXED ☐  
FYI ☐



P: PROJECTS/2022/22090/22090.DWG



**HLA**  
Engineering and Land Surveying, Inc.

2803 River Road  
Yakima, WA 98902  
509.966.7000  
Fax 509.965.3800  
www.hlacivil.com

## RIGHT-OF-WAY VACATION EXHIBIT MAP

COLUMBUS CASCADE COMPANY, LLC  
CITY OF YAKIMA, YAKIMA COUNTY, WASHINGTON