

Miller Park Radiance Mosaic Project

Tieton Mosaic

November 24, 2021



Tieton Mosaic

The studio started as the only company in the country that specializes in typographic mosaic. Our reputation work has expanded quickly. We are currently contracted to produce 25 large glass murals for Sound Transit's downtown Redmond station.



Concept inspiration

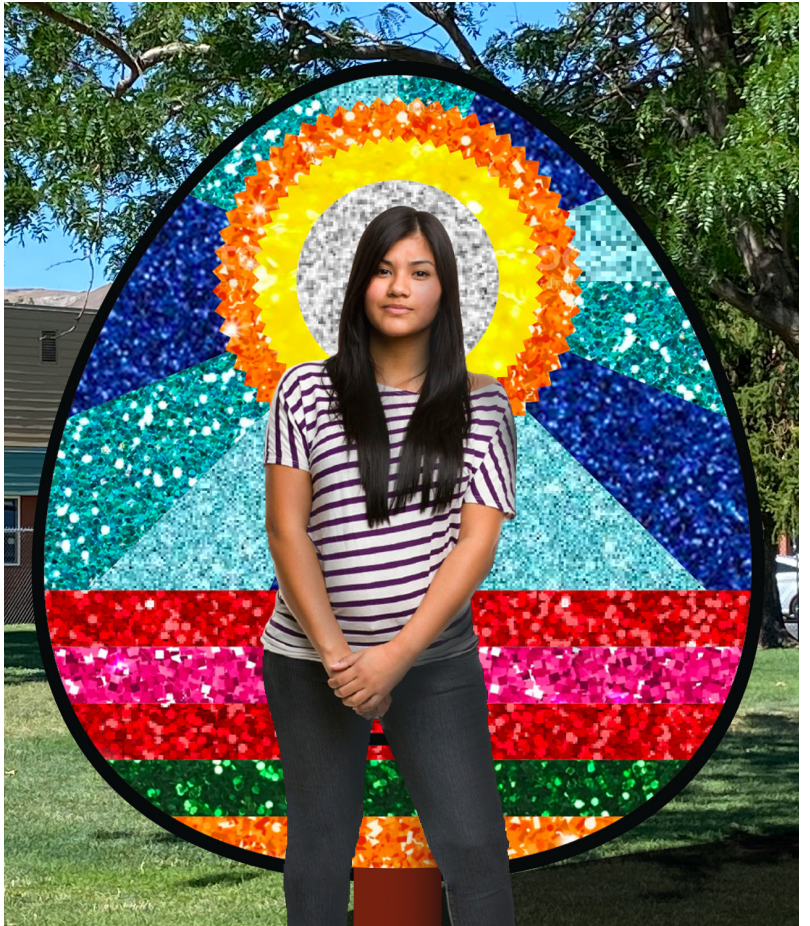
Halos, aureoles, and coronas have been used by artists and craftspeople throughout history to distinguish special individuals. Although most often in religious painting and sculpture, the device is often employed in secular applications as well. Mosaic is often applied for these treatments, for obvious aesthetic and functional reasons.



Mosaic Selfie Stations

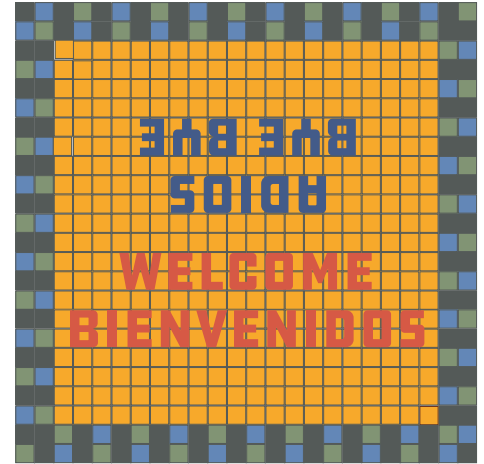
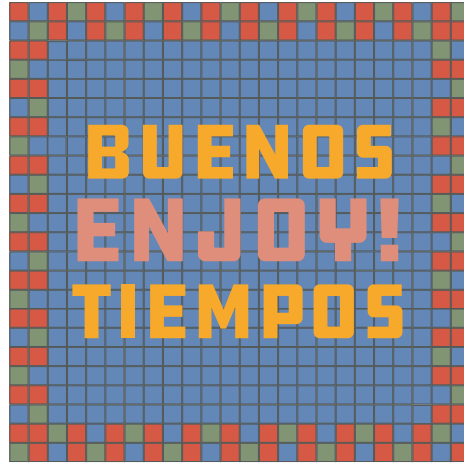
The idea is simple. We propose creating glass mosaic selfie stations in Miller Park that are delightful on their own, and that create brilliant and colorful snapshot backdrops for visitors to the park. The structures are similar to the signage we designed and installed around Tieton in 2015.





Mosaic Welcome Mats

We also propose installing several welcome mats at the entrances of Miller Park. These will be bilingual, and made out of unglazed porcelain tiles, a medium designed for these applications.



Mosaic Wings

We also propose to install a winged glass mosaic background on the south wall of the Washington Fruit building.

Rotary Picnic Structure Mosaic

The Southwest Rotary Pavilion has been identified as a structure that could be enlivened by adding a mosaic frieze on the front, back, and sides. The front mosaic would incorporate the Rotary logo.



Tieton Mosaic

Ed Marquand
PO Box 349
Tieton, WA 98947
ed@mightytieton.com
206 321-2982
tietonmosaic.com