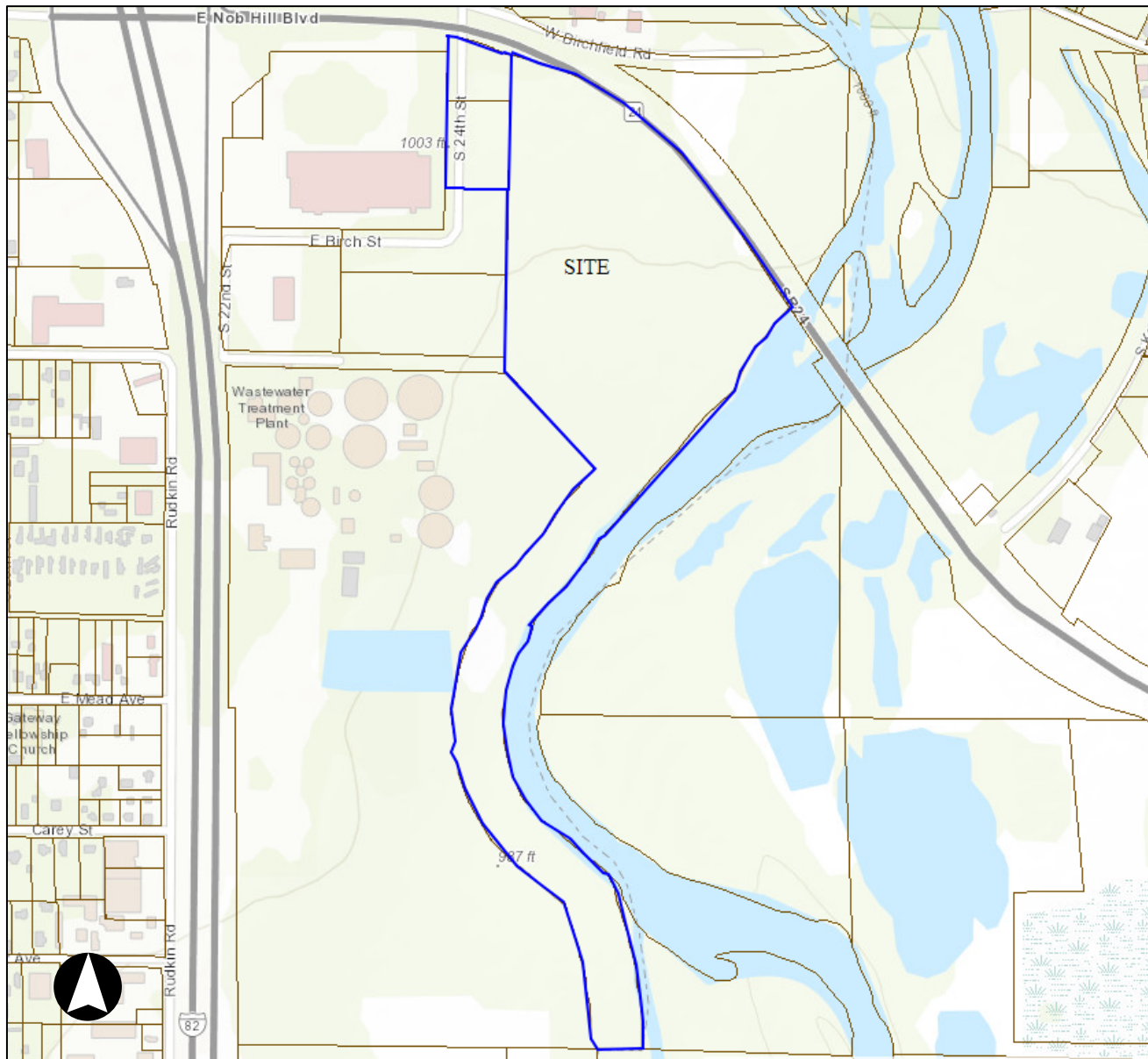


# VICINITY MAP



**File Number:** CPA#007-18, RZ#008-18 & SEPA#010-18  
**Project Name:** City OF YAKIMA – WASTEWATER DIVISION  
**Site Address:** VIC. OF HIGHWAY 24 & S 22<sup>ND</sup> ST



**Proposal:** Change the Future Land Use map designation for three parcels from Low-density Residential to Commercial Mixed-Use and rezone three parcels from Suburban Residential (SR) to General Commercial (GC) to enable a future proposal for a low-barrier homeless shelter use.

Contact the City of Yakima Planning Division at (509) 575-6183

Map Disclaimer: Information shown on this map is for planning and illustration purposes only. The City of Yakima assumes no liability for any errors, omissions, or inaccuracies in the information provided or for any action taken, or action not taken by the user in reliance upon any maps or information provided herein.

Date Created: 5/1/2018

