

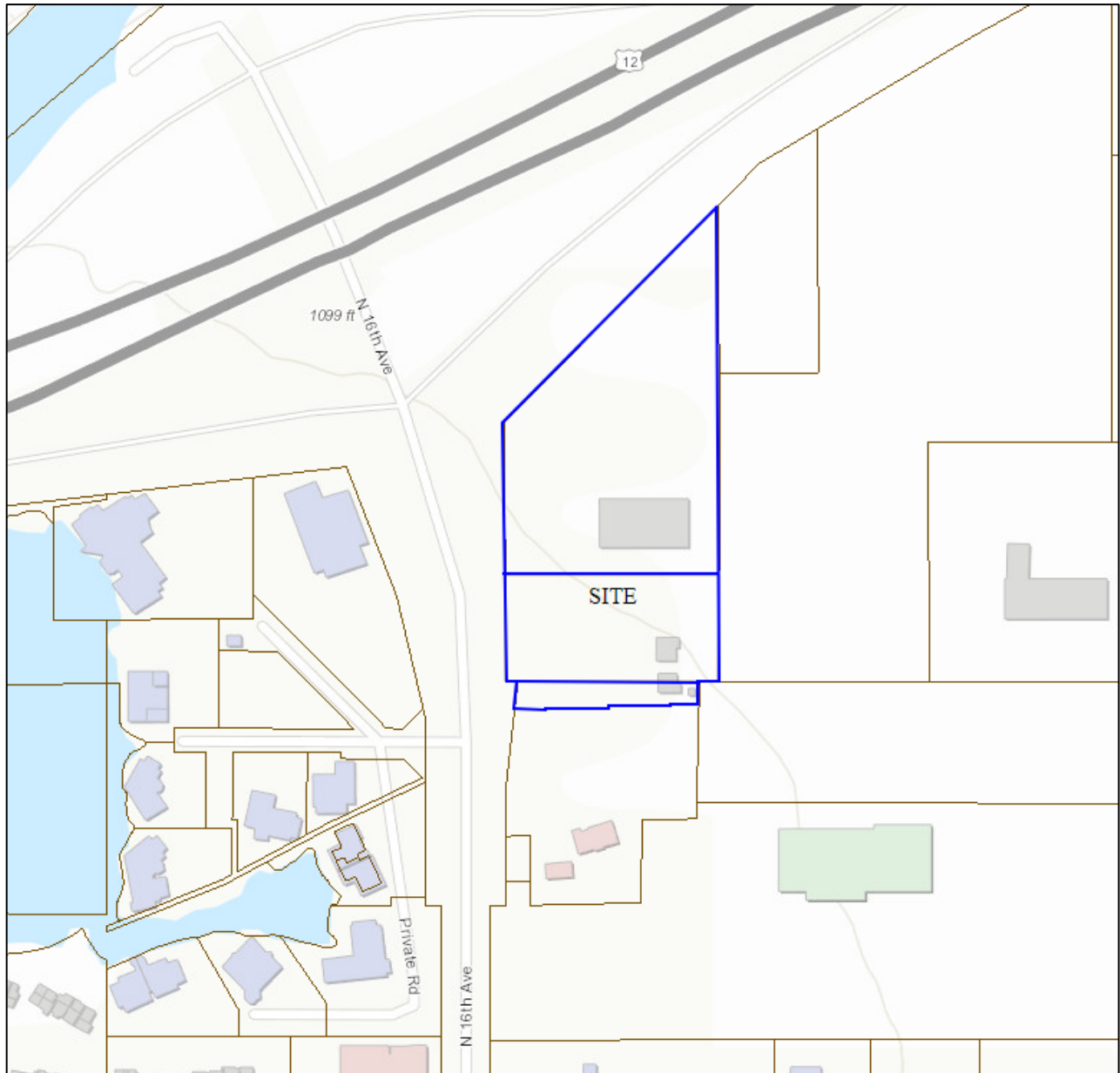
VICINITY MAP



File Number: CPA#004-18, RZ#005-18 & SEPA#007-18

Project Name: RIVERPOINTE LANDING LLC / WESTTOWNE LLC

Site Address: 1429, 1431, & 1439 N 16TH AVE



Proposal: Change the Future Land Use map designation for three parcels from Regional Commercial to Industrial and rezone three parcels from Large Convenience Center (LCC) to Light Industrial (M-1).

Contact the City of Yakima Planning Division at (509) 575-6183

Map Disclaimer: Information shown on this map is for planning and illustration purposes only. The City of Yakima assumes no liability for any errors, omissions, or inaccuracies in the information provided or for any action taken, or action not taken by the user in reliance upon any maps or information provided herein.

Date Created: 5/1/2018

